

5x HOT FIREPol® SolisGreen™ qPCR Mix

Description

Our newest real-time qPCR master mix based on DNA binding dye technology. SolisGreen™ is a new and unique dye with higher fluorescence, which enables detection of lower target concentrations.

Benefits

- improved detection of **low target concentrations**
- **higher** fluorescence level
- reaction set-up and shipment **without dry ice**
- compatible on **most cyclers** (see table on page 5)

Did you know?

SolisGreen™ and EvaGreen® dyes are detected in the same channel as SYBR Green I. You don't have to change any detection settings in your qPCR cycler.

Researchers already trust SolisGreen™

Reference:

“ Excellent product quality along with affordable prices and committed customer service: these are the reasons why Solis BioDyne is our strategic enzyme supplier since many years. Now we continue our partnership with the robust, stable and very sensitive SolisGreen mixes for our qPCR product platform. ”

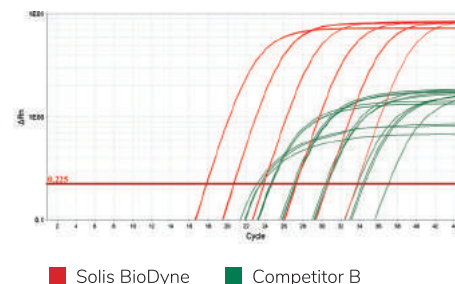
DAVIDE ROASCHIO

Scientist in Product Development

Loewe Biochemica GmbH, Germany

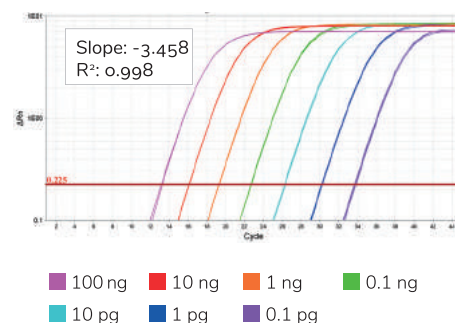
HIGHLY COMPETITIVE

Amplification of six tenfold dilutions of human GAPDH cDNA with 5x HOT FIREPol® SolisGreen™ qPCR Mix (red) and a qPCR mix from another vendor (green). Reactions were performed on an Applied BioSystems™ QuantStudio™ 6.



EXCELLENT SENSITIVITY

Amplification of human PPIA cDNA with 5x HOT FIREPol® SolisGreen™ qPCR Mix on an Applied BioSystems™ QuantStudio™ 6 shows excellent linearity across different DNA concentrations. The amount of cDNA per reaction ranges from 100 ng to 0.1 pg.



Send your sample request to info@solisbiodyne.com

PRODUCT	CAT. NO.	RXN/20 µl	SIZE in ml
5x HOT FIREPol® SolisGreen™ qPCR Mix	08-46-0000S (free sample)	50	0.2
	08-46-00001	250	1
	08-46-00008	2000	8
	08-46-00020	5000	20