

# SolisFAST® Master Mix

Fast singleplex and  
multiplex endpoint  
PCR assays!

[solisbiodyne.com](http://solisbiodyne.com)



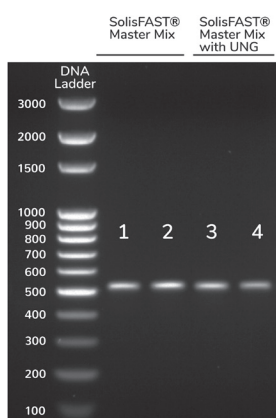
## Features

- **Fast** – less time from sample to results
- **Accurate** – reliable results in single- and multiplex assays
- **Stable** – 30-day stability at room temperature
- **Trustworthy** – avoid carry-over contamination with UNG mixes and get reliable results in Sanger sequencing applications

The mix contains all components necessary, except primers, nuclease-free water and DNA template.

SolisFAST® Master Mix is a 5x-concentrated, ready-to-use solution for fast singleplex and multiplex endpoint PCR assays. The mix allows amplification of up to 5 kb fragments from low complexity DNA templates (e.g. lambda, plasmid DNA), and up to 3 kb from complex DNA templates (e.g. human genomic DNA). Combining our novel *in-silico* designed SolisFAST® DNA Polymerase and optimized buffer, this mix offers robust PCR, accurate target detection, ice-free shipping and reaction set-up.

## Results in 20 minutes!



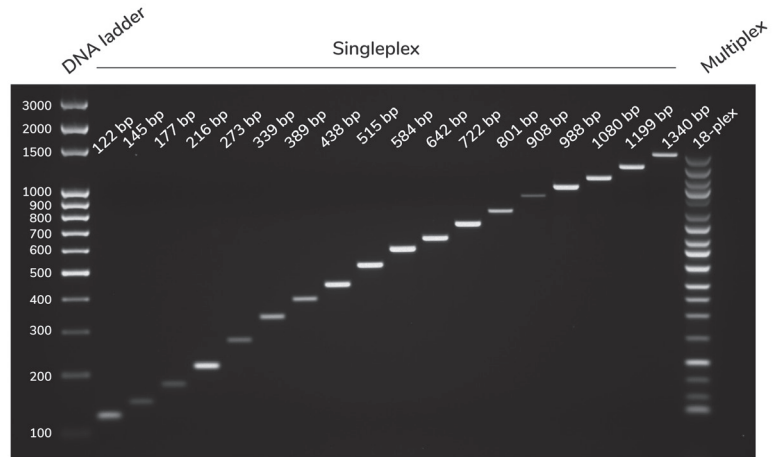
**Figure 1. SolisFAST® Master Mixes are suitable for 'slow' and 'fast' PCR cyclers.** HIRA gene fragment (515 bp) from human gDNA was amplified using SolisFAST® Master Mix (lane 1-2) and Master Mix with UNG (lane 3-4). Fast cycling settings (initial activation 1 min at 98 °C; denaturation 5 sec at 98 °C, annealing/extension 20 sec at 60 °C, 25 cycles) were used on Biometra T1 Thermocycler (lane 1 and 3) and Eppendorf® Mastercycler® X50s (lane 2 and 4).

PCR cycler	Cycler's ramp rate	PCR run time
Biometra T1 = 'slow' machine	4 °C/sec	26 min
Eppendorf X50s = 'fast' machine	10 °C/sec	20 min

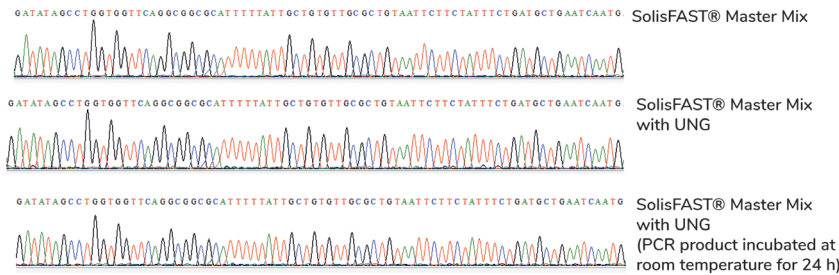
**World-  
wide  
ice-free  
shipping!**

## Excellent singleplex and multiplex PCR results!

**Figure 2. Equal performance of SolisFAST® Master Mix in singleplex and multiplex assay.** Eighteen fragments of human gDNA (ranging from 122 to 1340 bp) were amplified in singleplex and multiplex PCR. Amplifications were performed as a single run on Eppendorf® Mastercycler® X50s using 3-step cycling program optimized for multiplex assays (initial activation 2 min at 98 °C; denaturation 10 sec at 98 °C, annealing 10 sec at 60 °C, extension 30 sec at 72 °C (30 cycles).



## dUTP and UNG don't affect Sanger sequencing results!



**Figure 3. Sanger sequencing of products obtained with SolisFAST® Master Mix and Master Mix with UNG.** The presence of UNG enzyme in PCR sample doesn't affect the sequencing results after 24-hour incubation of PCR products at room temperature.

**Avoid carry-over contamination with UNG Mixes!**

## Ordering information

Product	CAT. NO.	RXN / 20 µl
SolisFAST® Master Mix	24-01-0000S (free sample)	50 rxn / 20 µl
	24-01-00001	250 rxn / 20 µl
	24-01-00001-5	5x (250 rxn / 20 µl)
	24-01-00020	5000 rxn / 20 µl
SolisFAST® Master Mix, Ready To Load	24-02-0000S (free sample)	50 rxn / 20 µl
	24-02-00001	250 rxn / 20 µl
	24-02-00001-5	5x (250 rxn / 20 µl)
	24-02-00020	5000 rxn / 20 µl
SolisFAST® Master Mix with UNG	24-21-0000S (free sample)	50 rxn / 20 µl
	24-21-00001	250 rxn / 20 µl
	24-21-00001-5	5x (250 rxn / 20 µl)
	24-21-00020	5000 rxn / 20 µl
SolisFAST® Master Mix with UNG, Ready To Load	24-22-0000S (free sample)	50 rxn / 20 µl
	24-22-00001	250 rxn / 20 µl
	24-22-00001-5	5x (250 rxn / 20 µl)
	24-22-00020	5000 rxn / 20 µl

» Ask for a FREE SAMPLE!



For further details and ordering please contact [info@solisbiodyne.com](mailto:info@solisbiodyne.com) or call +372 740 9960